



ETA PRO
General Trading Company

**ETA Pro is the leading
Architectural & Interior Design
company in the GCC**

• Advance

• Elegant

• Unique

Table of Content

Page: 2	Table of Content
Page: 3	About us
Page: 4	Our History
Page: 5	Yassin Mohammad <ul style="list-style-type: none">○ Mission Statement○ Vision Statement○ Purpose Statement
Page: 6	Mishari Al Ebrahim <ul style="list-style-type: none">○ Mission Statement○ Vision Statement○ Purpose Statement
Page: 7	Our Services <ul style="list-style-type: none">○ Exterior Designs○ Exterior Door Fixtures○ Exterior Lightning Elements○ Front Exterior Facade
Page: 8	<ul style="list-style-type: none">○ Interior Design & Decoration○ Stair Fixture & Design
Page: 9	<ul style="list-style-type: none">○ Smart Home Solutions
Page: 10	<ul style="list-style-type: none">○ Laser Cut Metal Screen Design
Page: 11	<ul style="list-style-type: none">○ Custom Panels
Page: 12	<ul style="list-style-type: none">○ Sliding Gates
Page: 13	<ul style="list-style-type: none">○ Laser Cut Metal Screen○ Sample Designs

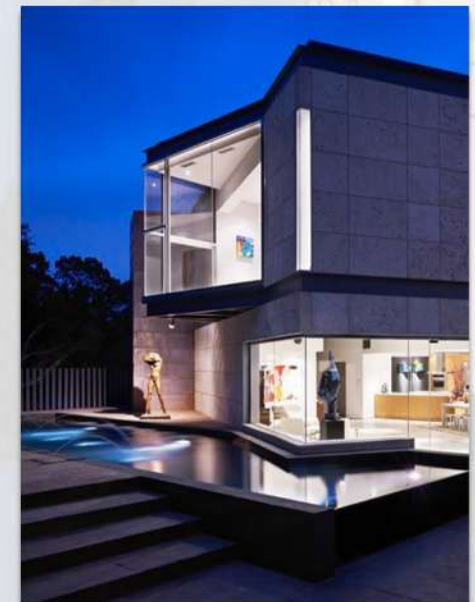


About Us

ETA Pro is a leading Architecture & Interior Design company focusing on the most sophisticated, advanced & elegant concepts to create exclusive & unique designs for your Home or Business Needs.

ETA Pro is focused & passionate about providing Architectural Design for our clients with the most beautiful & modern concepts for their home or office space. We also specialize in Interior Design, Landscaping Architecture, Lighting & Smart Home Solutions. All of our Design Concepts focus on Exclusivity in our products so that our clients feel Cherished & Involved in the entire Manufacturing process.

We have handled some of the biggest projects in Kuwait corporate Organisations & Real Estate Companies but also specialize in Personal Home Design. We pride ourselves on our agility to meet our clients' demands yet at the same time offer the most advanced solutions & quality/durability of the concepts we Manufacture.



Our History

ETA Pro was founded in 2017 by Yassin Mohammed & Mishari Al Ebrahim.

Our objective and mission are always to create the most highly sophisticated Architecture & Interior Design solutions in the Market. ETA Pro was founded on the main principles of always putting our clients first in all of our design processes and involving our clients with the detailed projects we work on with them.

We are proud of our close collaborations with our clients and partners in order to make sure our projects are the most unique, diverse, and exclusive in design philosophy in the Region.

Our consistent growth has stemmed from our visions of never compromising on quality, materials, and installation. We listen to our clients intensely and are always pushing the boundaries of what we are able to deliver in our design process. We are proud to be one of the market leaders in Architecture & Interior design in the region and work with clients on large-scale corporate projects through to private residences and custom design builds.

We obsess about our clients and their expectations and have built an extremely strong portfolio of projects of vastly different criteria. We follow a unique process of involving our clients every step of the way in the design process and installation so that our clients can see, first-hand, the evolution of a project and be active throughout. Our direction & passion comes from the incredible people who work for us and our cherished clients who put their trust in us. Exceeding clients' expectations is what drives us.



Yassin Mohammed

Mission Statement

"It's our mission at ETA Pro Architectural Design Associates to provide our clients focused service through our responsible practice of Architecture, Interior Design, and Project Management. Our tradition of dedication, professionalism, and outstanding customer service is a testament to that mission as we strive each day for excellence in bringing our

Vision Statement

"At ETA Pro we are passionate to be viewed upon as a respected architectural firm, providing high-quality design and services to our clients with honesty and integrity. We use the highest quality materials in every process we undertake and have a firm commitment to our clients in offering the best possible execution of our projects of any size or scale.

Every project is approached with the same rigorous standards towards quality, consistency, and efficiency putting ETA Pro's clients in the best possible hands for all their structural Engineering, Architectural and Interior Design needs. At ETA Pro we are committed to ensuring our work is of the highest standards consistently and exceeds the expectations of our clients. We are constantly driving our production to the highest standards and work harmoniously with our suppliers and partners in the process."

Purpose Statement

"ETA Pro was established to serve our clients and project partners with responsible responsive design that comes from attentive discussions and thoughtful solutions, to produce the projects our clients desire. We put our clients first in everything we do and we are committed to driving the highest levels of standards in both client service and excellence through to delivering all of our projects in their exact specifications in a timely manner consistently."



Mishari Al Ebrahim

Mission Statement

“At ETA Pro we are proud of our professional experience and our highly talented design team to put our clients’ expectations at the center of our design process. Our designs are characterized by creative use of light and space, lateral thinking, attention to detail, and the careful selection of robust high-quality materials. One of our key specialties is creating

Vision Statement

“At ETA Pro we are constantly pushing the boundaries as to what we can achieve and have diversified into the Education, Leisure, Hospitality and Healthcare Sectors in recent years. We welcome potential projects in new sectors to keep expanding our constantly growing portfolio of clients.

In addition to this at ETA Pro, we foster & promote a very positive working environment where self-motivation, autonomy, and responsible self-allocation of tasks are valued to ensure our Design, Manufacture & Installation teams are always performing to the highest standards possible. We also pride ourselves on constant inspiration, obsessing about our clients and finding new ways to create genuinely awe-inspiring Architectural & Interior Design Solutions.”

Purpose Statement

“ETA Pro has evolved beyond our primary goal of creating beautiful, high-quality, and unique design concepts for our clients. Our work at ETA Pro is now focusing on a broader vision of a more sustainable society to push the boundaries in our design & manufacturing process. With every project and new design, we aim to enhance the built environment, and the experience of its users, to advance our ability in creating incredible and exclusive designs for both your home or business space.”



EXTERIOR DESIGNS

ETA Pro's Exterior Design provides sophisticated design, logical planning and implementation services for all scale project. Our objective and mission is always to create the most highly sophisticated Architecture & Interior Design solutions in the Market.

We offer incredible Exterior Designs for Residential and commercial exteriors which comply with all regulatory requirements and standards. We use the most robust, durable materials to make sure our Exterior Design Projects are made with quality and precision consistently.



EXTERIOR DOOR FIXTURES

We design our doors to be durable, safe and aesthetically pleasing visually. All of our doors can be manufactured with wide throw hinges, swing clear hinges, raised barrel hinges and anchor hinges to make that all our doors' hardware are secure, reliable and durable.

ETA Pro offer a wide variety of different Exterior Door finishing which include Galvanized Aluminum, Unique Exterior Decals and exclusive Façade detailing to make sure your home or business is both secure and strikingly impressive.



EXTERIOR LIGHTING ELEMENTS

ETA Pro's lighting designers understand how outdoor lighting can integrate with any building and its larger site. By understanding the play between light and dark, our designers can use contrast and shadows to create inspiring and intriguing spaces.

We work with our clients to understand and establish the primary lighting design goals and identify key features, add illumination to surfaces that don't normally stand out and also create lighting solutions to a clear path or entry way.

FRONT EXTERIOR FACADE

When designing our Front Facades, we consider many various elements such as the design impact, materials, fenestration and focusing on building lines to create continuity for all building frontages.

We consider the number and composition of elements on a building's façade - and the contrasting relationship between them - which when viewed far or near, determine the visual quality and impact.



INTERIOR DESIGN & DECORATION

ETA Pro's Interior Design team follow a systematic and coordinated methodology – including research, space layout, analysis and integration knowledge into the creative process- to consistently meet the needs, expectations and resources of our clients.

Whether we are working on a corporate or residential space, ETA Pro's Interior Design team are motivated by design challenges and apply creative and technical solutions that are functional, attractive and beneficial to our clients.



STAIR FIXTURES & DESIGN

When designing a functional stair fixture location is an extremely important factor. Our dedicated engineers and design team take time consulting with our clients to find the right location and space for installation. Floor plans and technical working drawings are routinely checked and monitored to ensure all Stair Elements are both safe and in the most attractive locations.

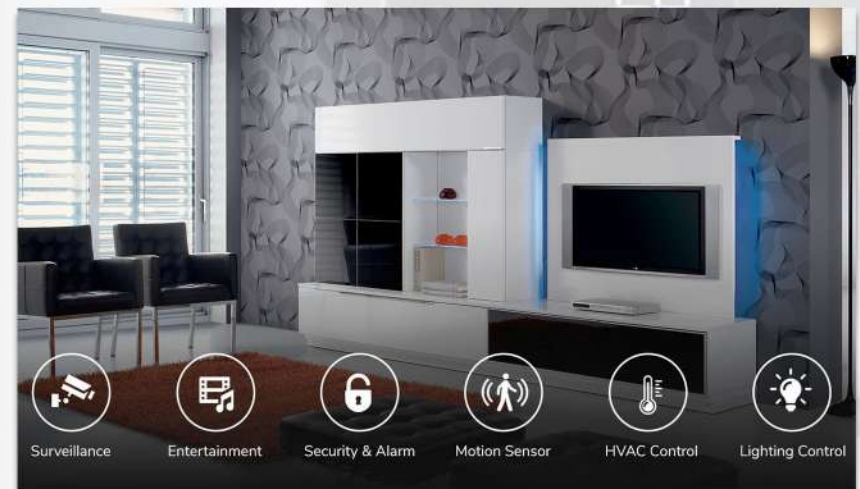
Saving space is also a priority for us and we advise our clients on detailed information to make sure space is utilized and optimized effectively in working on stair case design.

SMART HOME SOLUTIONS

Safety, security and convenience are all extremely important when selecting the perfect smart home solution. A Smart Home System connects all your appliances to automate specific tasks and monitor your home security system and cameras or control appliances such as your Air Conditioning systems, Sun Blinds, Refrigerator or Garage Door.

Smart Home Solutions allow you to have greater control of your energy use, all while automating settings like adjusting temperature, turning on and off lights, opening and closing window blinds and checking security cameras all from your Mobile or Tablet device.

Integration is simple and easy with IOS & Android compatibility. You can set timers on your mobile to adjust the Air Condition while you are out of your home or busines and then set it when you know you are returning at a set time. Timers are also able to be set for lighting and blinds so that all are automated daily on a set schedule such as blinds closing at sunset and then reopening at sunrise.



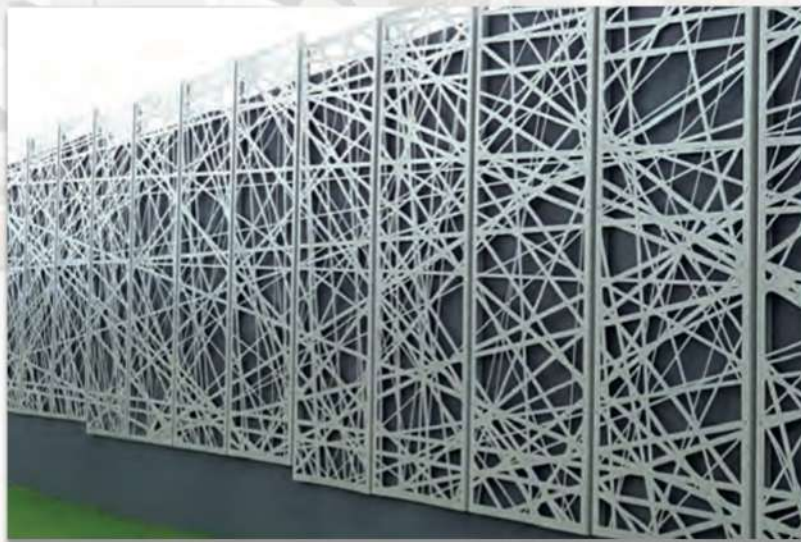
LASER CUT METAL SCREEN DESIGNS

ETA Pro's exclusive range of Laser Cut Decorative Screens will bring style and modern luxury to any space. Whether it's a commercial or domestic project, ETA Pro have a decorative screen design to suit any solution.

Our screens are available in a range of 2 exciting materials & finish options, including

Weathered Aluminum (Corten) and Galvanized Powder Coated Aluminum.

NOTE: Most designs can be customised to different screen sizes and shapes and can be fabricated to allow for various fixing requirements. The designs shown are based on a ratio of 1:2 (i.e. 900 x 1800mm) so screen designs outside of this ratio may vary slightly to suit.



CUSTOM PANELS

FREE STANDING PANELS

We can supply freestanding aluminium frames to attach our Laser Screens. Our standard frame comes in a 40 x 40mm box section. Custom frames as well as base plate and in ground options are available on request.

WALL FIXED FEATURE PANELS

Our Laser Screens can be used as Feature Panels and can be attached to any wall using a variety of fixing methods.

We recommend using 19mm Stainless Steel Standoff Fixings to create a floating shadowed effect.

SLIDING GATES

We create unique custom Sliding Gates using any of our screen designs, customised and face fixed to our 50 x 50 Sliding Gate Frames (100 x 50mm bottom rail).

Simply specify:

- Opening between posts/brick piers
- Sliding Gate height
- Allow 60mm for track and wheels
- Rake on driveway (if not level)
- Which way the gate is opening (when looking from the road, is it sliding open to the left or right)
- Automation (if required)

DOUBLE GATES

Our screens can be customised and face fixed to our 50 x 50mm Aluminium Double Entry Gate Frames and supplied to size.

Simply specify:

- Opening between posts or brick piers.
- Double Gate height (remember to allow gap under gate).
- Hinge and Latch options
- Automation (if required)

PEDESTRIAN GATES

Using 40 x 40mm Aluminium Frames, we can create a grand entrance to your home by customising any of our Laser Screen range to be face fixed to Pedestrian Gates.

Simply specify:

- Opening between the posts.
- Pedestrian Gate height (remember to allow gap under gate).
- Hinge and Latch options



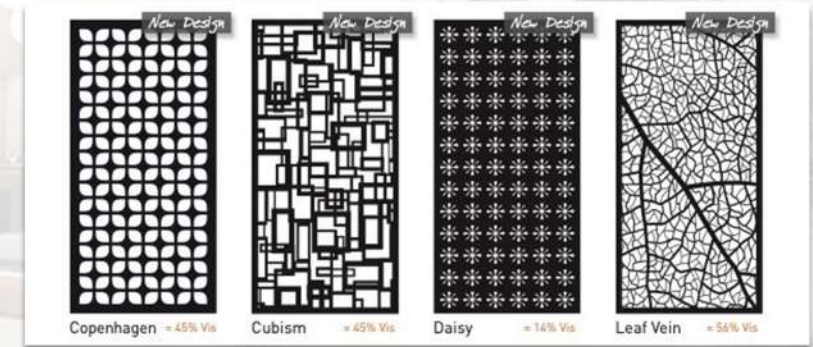
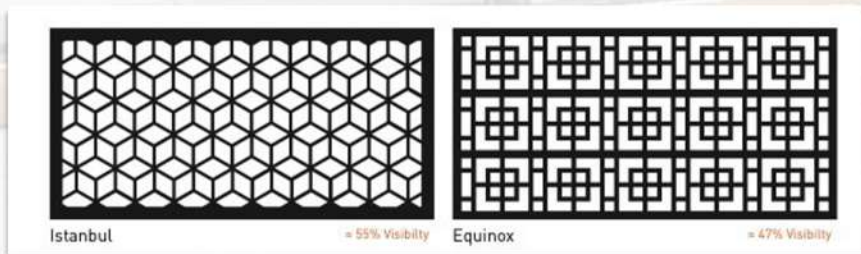
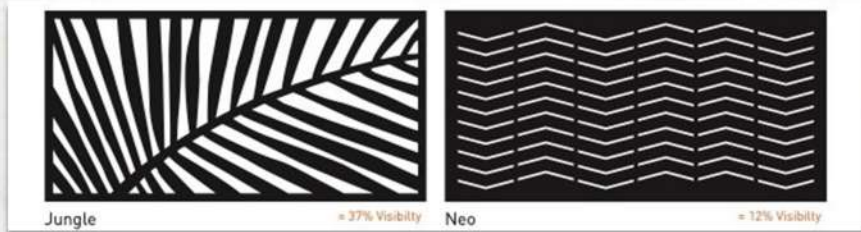
Weathered Aluminum (Corten)

Corten Aluminum is a high strength weathering Aluminum which forms a stable, attractive rust-like appearance when exposed to weather. The Aluminum is 3mm thick and can be supplied in panels up to 2400mm x 1200mm. The screens are suitable for indoor and outdoor use with a variety of applications.

Galvanized Powder Coated Aluminum

Our Galvanized Aluminium Screens are made from light-weight, tough, rust free aluminium with a Galvanized powder coated finish. You can choose your colour from our Interpon Colour Chart. The panels are 3mm thick and can be supplied in sizes up to 3000mm x 1500mm.

Laser Cut Metal Screen Sample Designs





Head Office

**Kuwait City. Sharq. Ahmed Algaber Street.
Raeed-Jawad Building. Khanseen Complex. 1st Floor.**



6995 3413



support@etapro.com



Showroom Address

Amghara Industrial Area, Block 3

